

Information

OpenScape Xpressions V6

Packaged, full featured Unified Communications Solution

Communication for the open minded

Siemens Enterprise Communications
www.siemens-enterprise.com/open

SIEMENS

OpenScape Xpressions is a simple-to-deploy, Unified Communications solution



It's a completely packaged, self contained, full-featured Unified Communications (UC) Solution. It is an ideal out-of-the-box UC solution for businesses that need to deploy UC quickly on a reduced budget.

It includes built-in Voice Messaging, Unified Messaging, Instant Messaging, Presence, and in-house Audio and Web Conferencing.

OpenScape Xpressions' Audio and Web Conferencing Application helps reduce escalating travel and 3rd party conferencing costs. It also allows you to become more responsive to customers by enabling employees to see which colleagues or experts are available and, with just a few clicks, to initiate spontaneous audio conferencing and web collaboration sessions.

Presence Feature

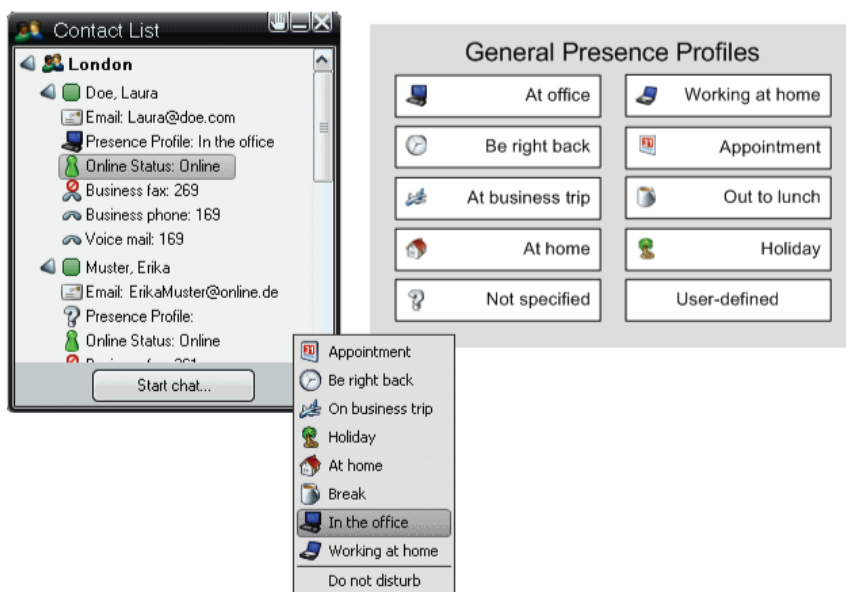
OpenScape Xpressions' Presence feature provides information about users'

- Telephony Presence
- Online Presence
- Presence Profile

The telephone status represents the current status of a user's telephone (available, busy, in conference, etc.)

The Online status displays whether the respective user is logged in and it differentiates between different statuses that represent the user's current activity and the availability status?

The presence profile provides information about the user's availability and location.

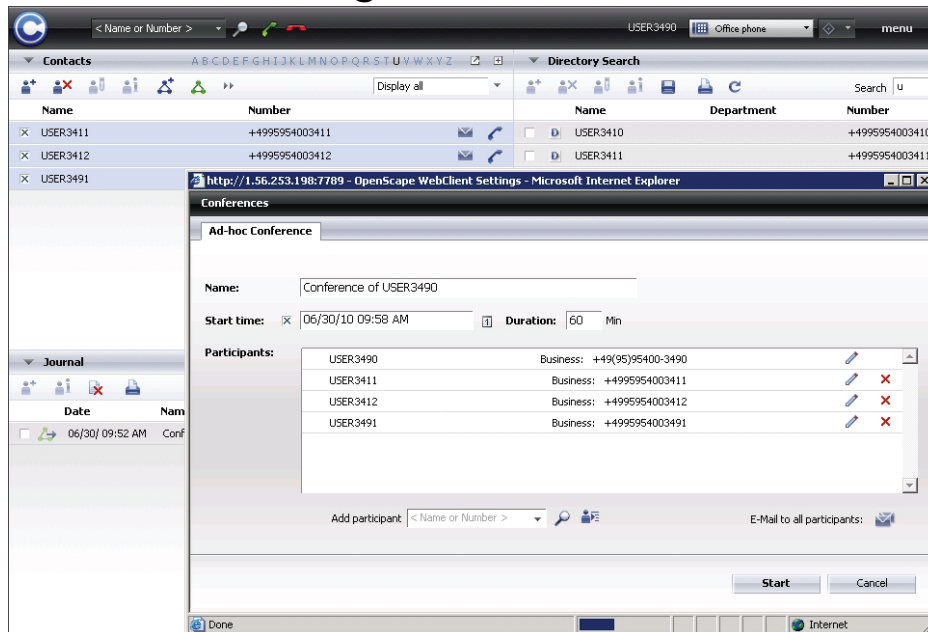


Instant Messaging / Chat

OpenScape Xpressions' Instant Messaging feature provides a simple and intuitive way to communicate in real-time using text. By knowing the IM presence status of key colleagues, users can quickly initiate chat sessions, eliminating delays in communications and speeding up decision making.



Audio Conferencing



OpenScape Xpressions' built-in Audio Conferencing facilitates cost-effective collaboration amongst teams.

It provides the following capabilities:

- Scheduling and initiating a voice conference
- Scheduling and initiating a web conference
- Scheduling and initiating a combined voice/web conference
- Monitoring the scheduled and initiated voice conferences via the OpenScape Xpressions Web Client.

Web Collaboration / Video Conferencing

OpenScape Xpressions' Web Collaboration provides collective use of Programs and Documents during Real-Time Computer Conferences.

In this way all other Conference participants can see the same Image, knowing what Everybody is on about.

Documents and the entire desktop can also be shared for editing or directly to discuss and illustrate matters directly on documents or on a whiteboard.

Video Conferencing is a part of OpenScape Xpressions Web Collaboration.

This ensures a high degree of flexibility and saves expenses for long journeys, accommodation etc.



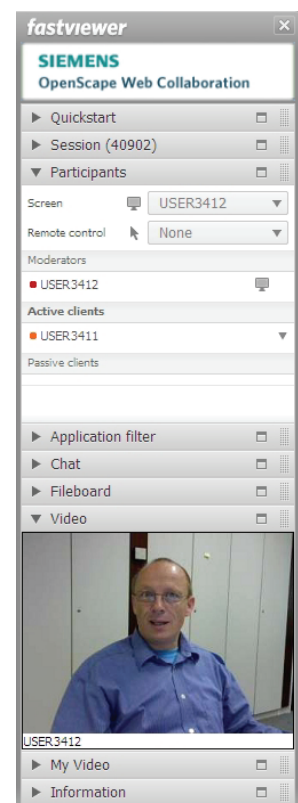
TÜV SÜD-certified

We set the highest standards towards security and encoding of our communication solutions. This is why we took the hardest tests in order to present you this seal of quality in favour.



BISG-certified

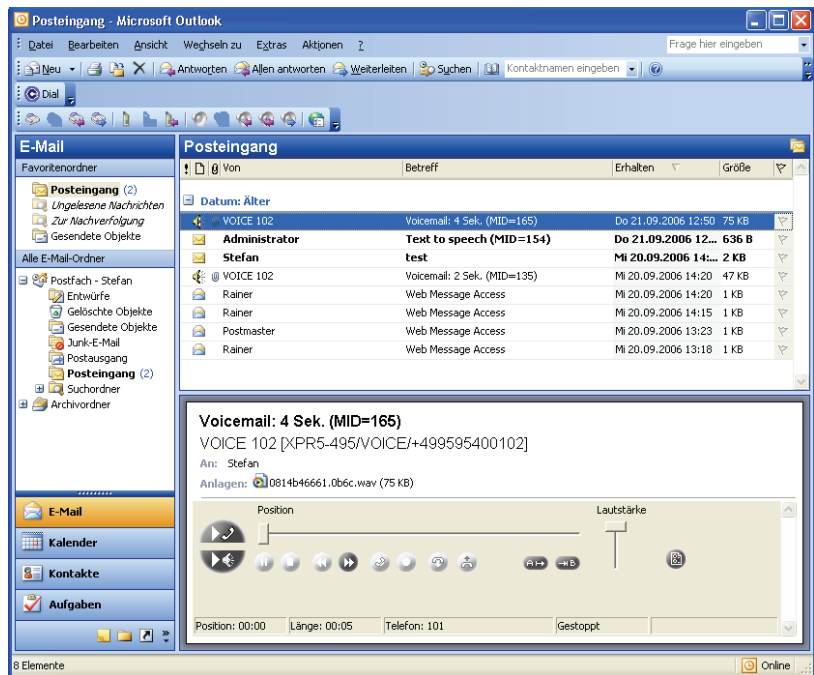
The German association for IT experts (BISG) awarded FastViewer with this seal of quality and describes the performance of the products with "very good". The tester were deeply contented with the ease of use, the stability and that FastViewer is free of installation.



Voice Mail

OpenScape Xpressions' Voice Mail improves responsiveness and productivity while mobile. It provides:

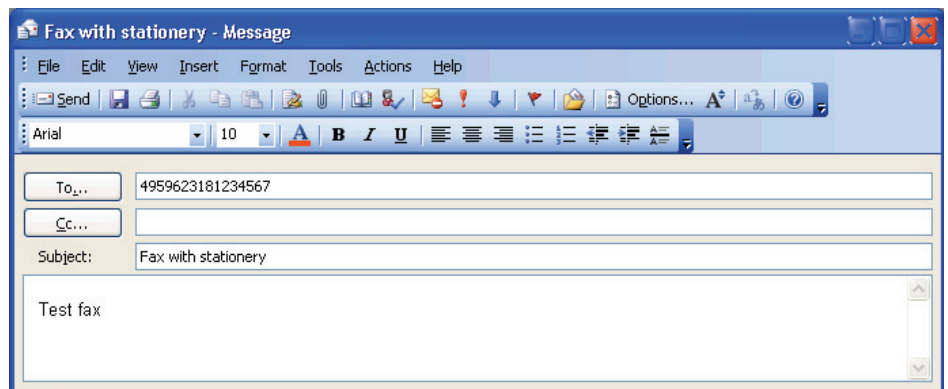
- Access and manage voice mail from any phone, standard email client or internet browser
- Forward incoming calls to any phone
- Customize greetings based on caller type
- Optimize your telephone user interface (TUI)
- Visual Voicemail (from Desktop Client)
- Greetings in 2 languages
- For redirected calls, can select 1st or 2nd mailbox



Fax Mail

OpenScape Xpressions Fax Mail enables users to:

- Access and manage fax mail messages from any phone, standard email client or internet browser
- Receive, edit and archive faxes
- Send or forward faxes to any printer or fax machine
- Send faxes directly from MS Word or PowerPoint
- Attach faxes to email messages
- Offer fax-on-demand to callers



Unified Messaging

OpenScale Xpressions' Unified Messaging feature enables users to access all their Voice, Fax, E-mail and SMS messages in a single inbox.

- Saves time
- Increases convenience
- Enhances productivity

View all messages in a single inbox

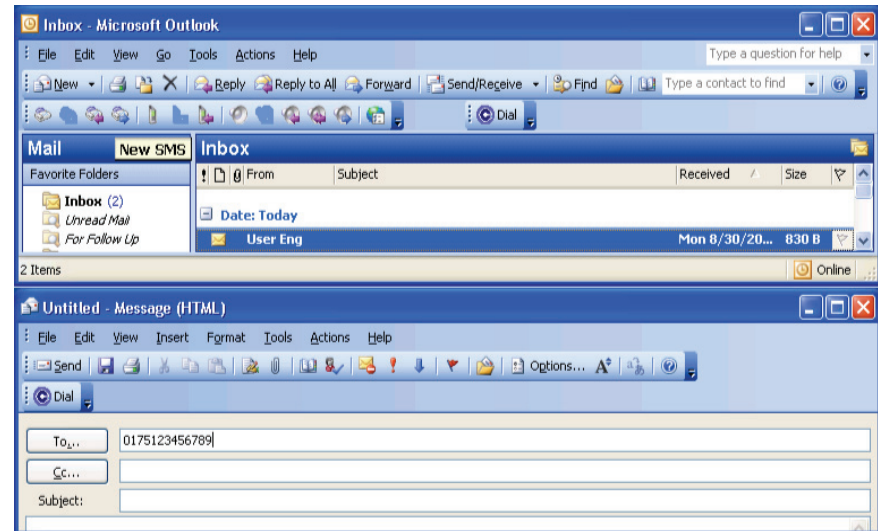
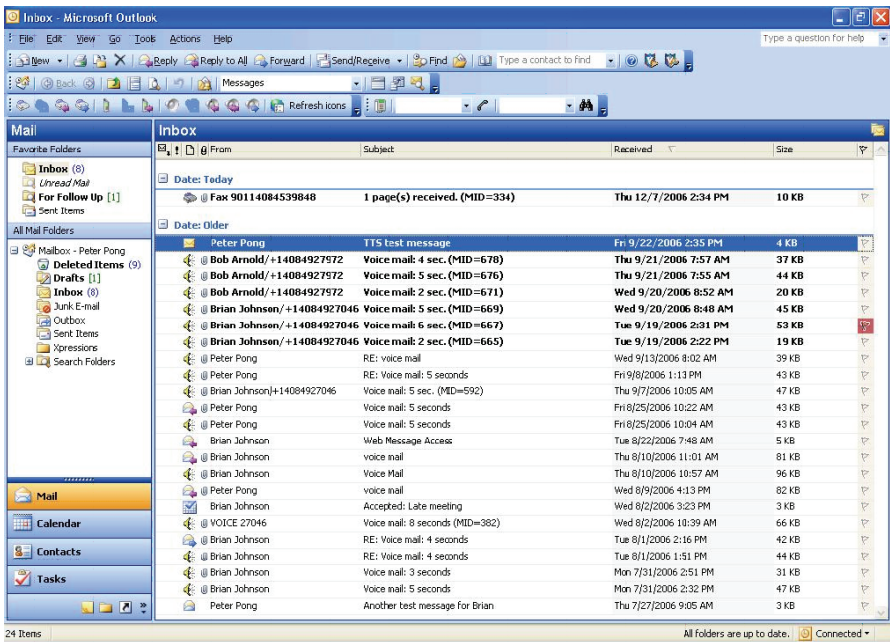
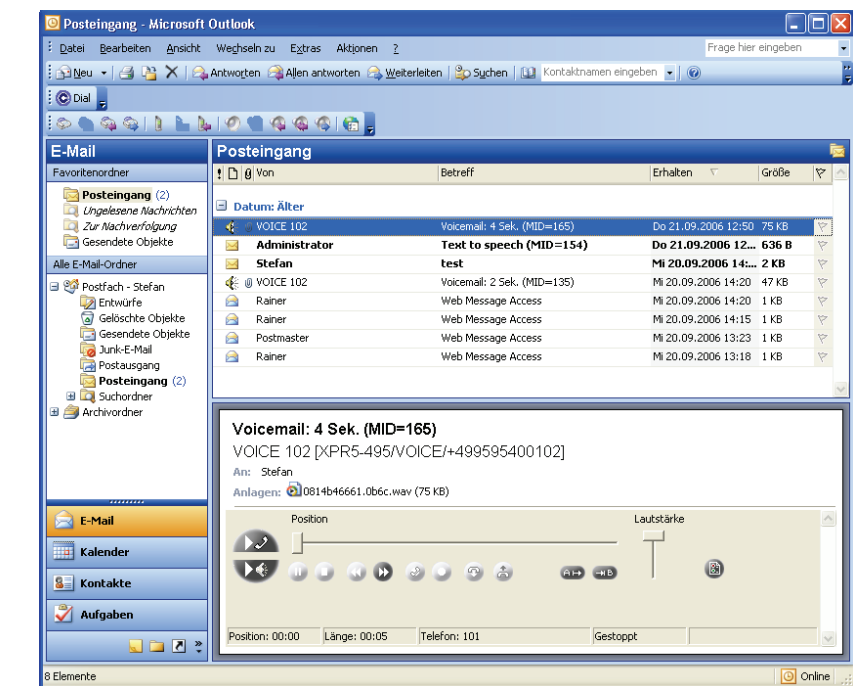
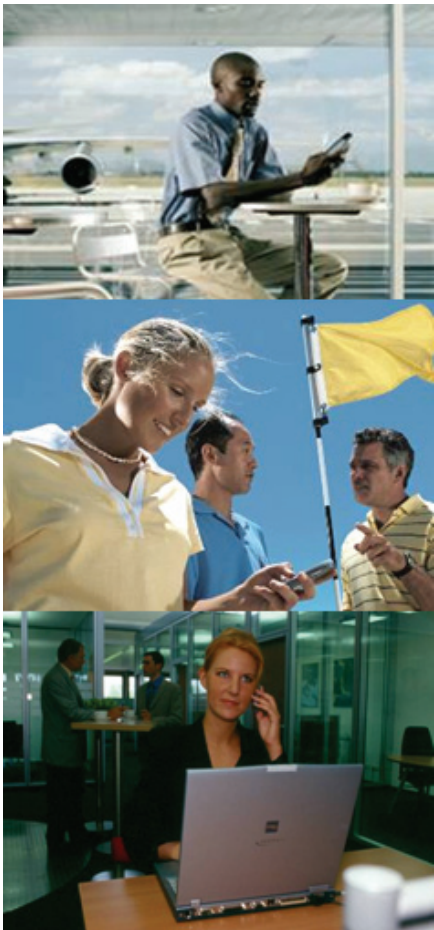
Access inbox from anywhere

OpenScale Xpressions Email expedites Business Communications

- Access and manage email from any phone, standard email client or internet browser
- Attach voice messages and faxes to email messages
- Use Xpressions as an email system for your small business

OpenScale Xpressions Short Message Service expedites Mobile Business Communications

- Send short messages to mobile phones using a standard email client
- Receive SMS from mobile phones in your unified inbox
- Be notified of new messages via SMS



Technical Data

Connection

Connection to	<ul style="list-style-type: none"> • HiPath 3000 from V6 with CorNet N • HiPath 3000 from V7 with CorNet-IP/T.38 • HiPath 4000 from V3 with CorNet NQ • HiPath 4000 from V3 with CorNet-IP/T.38 • HiPath 8000/ OpenScape Voice from V3.1 mit SIP/T.38 • HiPath DX with CorNet NQ (Functionality of Xpressions V5) • Hicom 150 E/H (Functionality of Xpressions V4) • Hicom 300 E/H (Functionality of Xpressions V4) • HiPath 3000 before V5 (Functionality of Xpressions V4) • HiPath 3000 V5 (Functionality of Xpressions V5) • HiPath 4000 V1 (Functionality of Xpressions V4) • HiPath 4000 V2 (Functionality of Xpressions V5) • HiPath 8000 V2.2 (Functionality of Xpressions V4) • HiPath 8000 V3.0 (Functionality of Xpressions V5) • project specific other-PBX (DSS1/QSIG) • customer LAN (TCP/IP) (100 BaseT) <p>The following connectivity's are released:</p> <ul style="list-style-type: none"> – HiPath 5000 (project specific) – Cisco CallManager 6, 7, 8 (XCAPi) – Alcatel OmniPCX Enterprise R8/R9 (ISDN)
Number of channels per server/system at Hicom 300/HiPath 4000	<p>Up to 60/300 channels/ports, with</p> <ul style="list-style-type: none"> • max. 60/300 for voice • max. 60/300 for fax
Number of channels per server at Hicom 150/HiPath 3000/5000	<p>Up to 60 channels/ports, with</p> <ul style="list-style-type: none"> • max. 60 for voice • max. 60 for fax
<p>Number of channels per server using IP-connectivity (G.711)</p> <p>For G.729</p> <p>For fax over T.38</p> <p>VMWare Installation (G.711) (2 Processor, 4 core, 2,53 GHz, 32GB RAM, 64 bit)</p>	<p>HiPath 4000: Max. 30 channels per PC/ max. 300p per distributed system</p> <p>OpenScape Voice: Max. 60 channel per PC/ max. 100 per Satellite/ max. 300p per distributed system</p> <p>Max. 40 channels per PC / max. 280 per distributed system</p> <p>Max. 40 channels per PC/ max. 60 channel per Satellite/ max. 100 per high-end Satellite</p> <p>Max. 20 channels/ max 80 channels per satellite</p>
<p>Number of channels for</p> <p>Audio-Conferencing</p> <p>Web-Conferencing</p>	<p>Max. 200 channels, of these 100 in one conference</p> <p>Max. 200 channels, of these 100 in one conference</p>

User mailbox access

Telephone access to	<ul style="list-style-type: none"> • Voice messages • Fax messages • E-mail
PC client access to	<ul style="list-style-type: none"> • Voice messages • Fax messages • E-mail

Services supported

Desktop clients supported	<ul style="list-style-type: none">• Netscape Communicator 7.1• Microsoft Internet Explorer 6.5, 7.0 and 8• Microsoft Outlook XP, 2003, 2007, 2010• Microsoft Outlook Express V5.5, V6.0• OpenScape Xpressions Communications• OpenScape Xpressions Web Assistant
E-mail integration with Microsoft Exchange	<ul style="list-style-type: none">• Microsoft Exchange 2003• Microsoft Exchange 2007• Microsoft Exchange 2010
E-mail integration with Lotus Notes / Domino	<ul style="list-style-type: none">• Lotus Notes 6.0 (only Xpressions V6 R0) / 6.5.1/ 6.5.3/ 6.5.4• Lotus Notes 7.0/ 7.01/ 7.02• Lotus Notes 8.0.X/ 8.5.1
E-mail gateways	<ul style="list-style-type: none">• SAP R/3 from 4.5b via SAPconnect• SMTP mail
Directory Integration via LDAP Connector	<ul style="list-style-type: none">• Customer Directory• Dir X• Microsoft Active Directory• Netscape Dir

SMS (Short Message Service)

Short message to mobile phone to signal new message or via Mail Client	GSM 900/1800 networks
Max. number of characters to be transferred (incl. muted vowels and special characters)	Max. 160 characters
Number of messages per SMS box	Approx. 300 per hour
Number of SMS boxes per OpenScape Xpressions	Max. 2

Fax Services

Fax service	Fax G3
Fax coding in accordance with T.30	Yes
Fax coding in accordance with T.38	Yes
Fax on Demand	Yes

Access protection

Mandatory password	Yes
Min. number of characters in the personal password	1
Max. number of characters in the personal password	24

Configuration sizes

Max. number of users/mailboxes	Single Server	Distributed System
E-mail in case of replication	600	
Voice mail	4000	20000
Unified Messaging (Voice-, Fax-, SMS, e-Mail)	2000	10000
Number of users optiClient Extensions (Standard release)	1000	
Number of users OpenScape Xpressions Web Client (Standard release)	2500	
Max. number of messages per user	Dependent on HDD, not strictly limited	
Max. message memory per mailbox	Dependent on HDD, not strictly limited	
Operating languages Telephone and display Display reduced to ASCII 7-bit	<ul style="list-style-type: none"> • German • English (UK) • English (US) • French • French (Canada) • Italian • Spanish • Spanish (US) • Dutch • Portuguese • Portuguese (Brazil) • Turkish • Russian • Japanese 	
Max. number of individual distribution lists per user	99	
Max. number of addresses per distribution list	99	
Max. number of announcements per user	9	

Hardware requirements

Minimum PC Server configuration	
Processor (Intel only)	Standard: Intel Pentium IV 2 GHZ (incl. Upgrades) Fax over IP requires at least a Dual-Core-Processor.
RAM	Minimum/Standard 2048 MB + 1024 MB for TTS + 512 MB for ASR + 2048 MB for Conferencing + 1024 MB for Web Client usage
Hard disk (NTFS) Additional hard disk for data backup	Standard: 2x 100 GB (IDE oder SCSI)
DVD drive	For installation
LAN card	Ethernet (10BT /) 100BT
V.24 / COM port	Additional V.24 board possibly necessary from 2nd COM (service modem, if necessary MWI modem)
PCI/PCIe slots (for voice/fax interface boards)	Minimum: 1 Maximum: 5
Operating system	Standard <ul style="list-style-type: none"> • Windows 2008 Standard or Enterprise Server • Windows 2003 Standard or Enterprise Server R2 SP2 • Windows XP Professional SP3 Cluster <ul style="list-style-type: none"> • Windows 2008 Server Enterprise R2 • Windows 2003 Server Enterprise R2 SP2
Operating mode	64 Bit or 32 Bit mode

Minimum PC Client configuration	
Processor	Minimum: Pentium IV 1300 MHz
RAM	Minimum: 512 MB
LAN card	Ethernet (10BT /) 100BT
Operating system	<ul style="list-style-type: none">• Windows XP Professional from SP2• Windows Vista Business or Enterprise from SP1• Windows 7
Optional accessories	Sound card / Microphone /Headphones
Operating mode	64 Bit or 32 Bit mode

Copyright © Siemens Enterprise
Communications GmbH & Co. KG

**Siemens Enterprise
Communications GmbH & Co. KG
is a Trademark Licensee of Siemens AG**

Hofmannstr. 51, D-80200 München, 10/2010

Reference No.: A31002-S2360-D101-1-7629

The information provided in this document contains merely general descriptions or characteristics of performance which in case of actual use do not always apply as described or which may change as a result of further development of the products. An obligation to provide the respective characteristics shall only exist if expressly agreed in the terms of contract. Subject to availability. Right of modification reserved.

The trademarks used are owned by
Siemens Enterprise Communications GmbH & Co. KG
or their respective owners.